



"Making Pittsburgh Home"

Berkley Manor

90 Berkley Manor Drive, Cranberry Twp., PA 16066

Berkley Manor is situated in a tranquil setting, yet conveniently located near shopping and entertainment on US Route 19, only minutes away from the Pennsylvania Turnpike (I-76) and I-79. Relax on the balcony or spend an afternoon with your child at Berkley Manor's playground.



Berkley Manor is a gated community. Parking is included and is conveniently located in front of your apartment. An outdoor swimming pool, tanning bed and 24-hour fitness center are some of the amenities at the property. Each apartment contains large walk-in closets and nine-foot ceilings. Berkley Manor is a great place to call home.



Apartment Package

Complete Furniture Package-sofa, love seat, coffee and end tables, dining table, beds, nightstands, and dressers

Complete Housewares Package-microwave, coffee maker, electric can opener, toaster, cookware, dishes, glasses, utensils, flatware...everything needed to cook and serve

Modern Kitchen with Full Size Appliances-refrigerator, range, dishwasher, and garbage disposal

Washer and Dryer in each apartment

Expanded Cable Television with DVD and VCR

Internet Access-high speed broadband connection

Private Phone Line-free local calling and digital answering machine

Utilities-electric, gas and water

Weekly Housekeeping and linen exchange

Pet Policy-weight limit and restrictions-one time \$250 non-refundable pet fee



Rates	Square Feet	3-10 Nights *	11-29 Nights * 7	30 + Nights
		Confirmed Vacate	day vacate notice	14 day vacate notice
1 bedroom	779	\$160	\$130	\$110
2 bedroom	1007	\$173	\$143	\$123
3 bedroom	1194	\$194	\$164	\$144

* Stays of less than 30 nights are subject to 14% tax, rate does not include tax.

Corporate Accommodations, Inc.

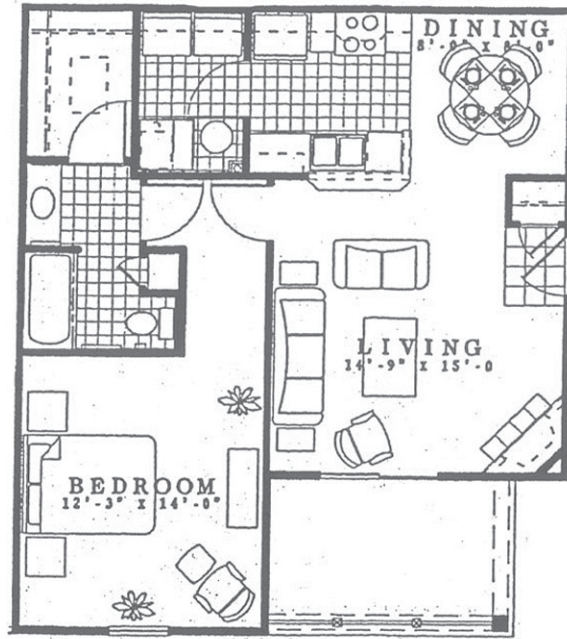
"Making Pittsburgh Home"

1.800.899.5456

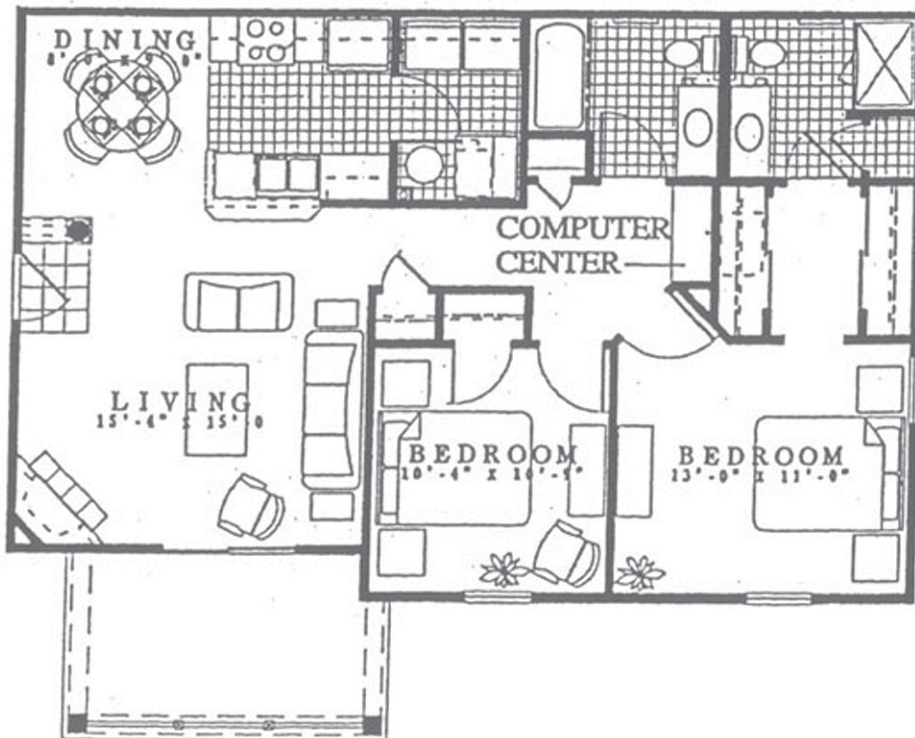
www.corpaccom.com

Floor Plans

One Bedroom-776 Square Feet

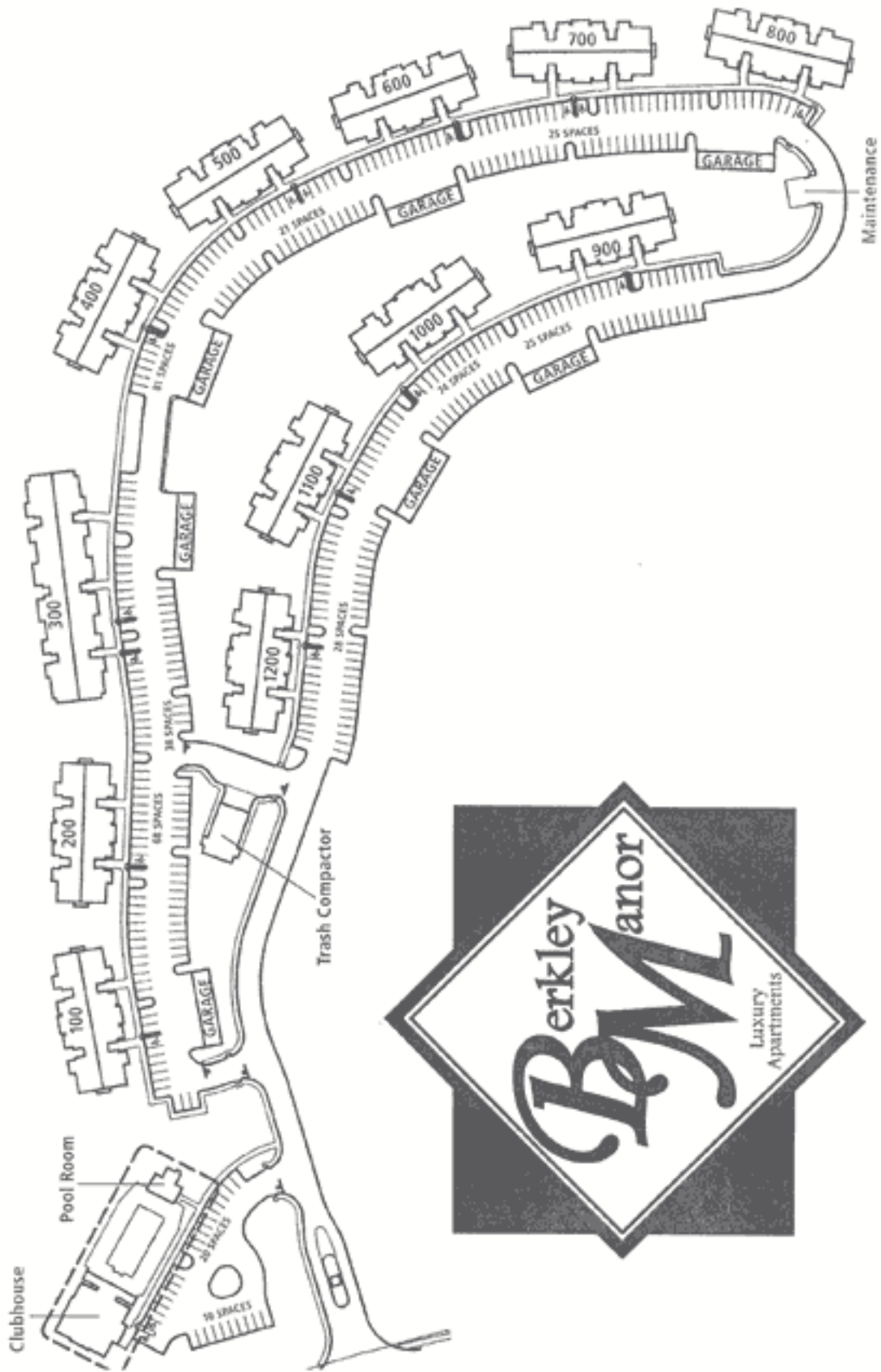


Two Bedroom-1007 Square Feet



Corporate Accommodations, Inc.
"Making Pittsburgh Home"
1.800.899.5456
www.corpaccom.com

Property Map



Corporate Accommodations, Inc.
"Making Pittsburgh Home"
1.800.899.5456
www.corpaccom.com

Directions

From Pittsburgh: Follow I-279 North until it merges with I-79 North. Follow I-79 North to the Mars/Cranberry (PA Route 228) exit. At the end of the ramp, make a left onto Rt. 228 West. Cross US Route 19. US Route 228 turns into Freedom Road. Continue on Freedom Road for 2 miles to Powell Road. Turn left onto Powell Road. Berkley Manor will be on your left.

From Pittsburgh International Airport: Follow I-376E towards Pittsburgh. Take Exit 64A for I-79 North towards Erie. Follow I-79N to the Mars/Cranberry (PA Route 228) exit. At the end of the ramp, make a left onto Rt. 228 West. Cross US Route 19. US Route 228 turns into Freedom Road. Continue on Freedom Road for 2 miles to Powell Road. Turn left onto Powell Road. Berkley Manor will be on your left.

